



# INVESTMENT OPPORTUNITIES IN E&P ACTIVITIES IN PERU

Promotion and Communications  
Management

MARCH 2013

Peru is located within one of the most prolific hydrocarbon trends in South America: “The Sub Andean Megatrend”

- 1 Light oil areas in Western Marañon Basin
- 2 Heavy oil areas in Eastern Marañon Basin
- 3 Hydrocarbons Occurrence in Ucayali Basin
- 4 Camisea and Adjacent gas and condensate fields

Areas with historical production of over 150 years

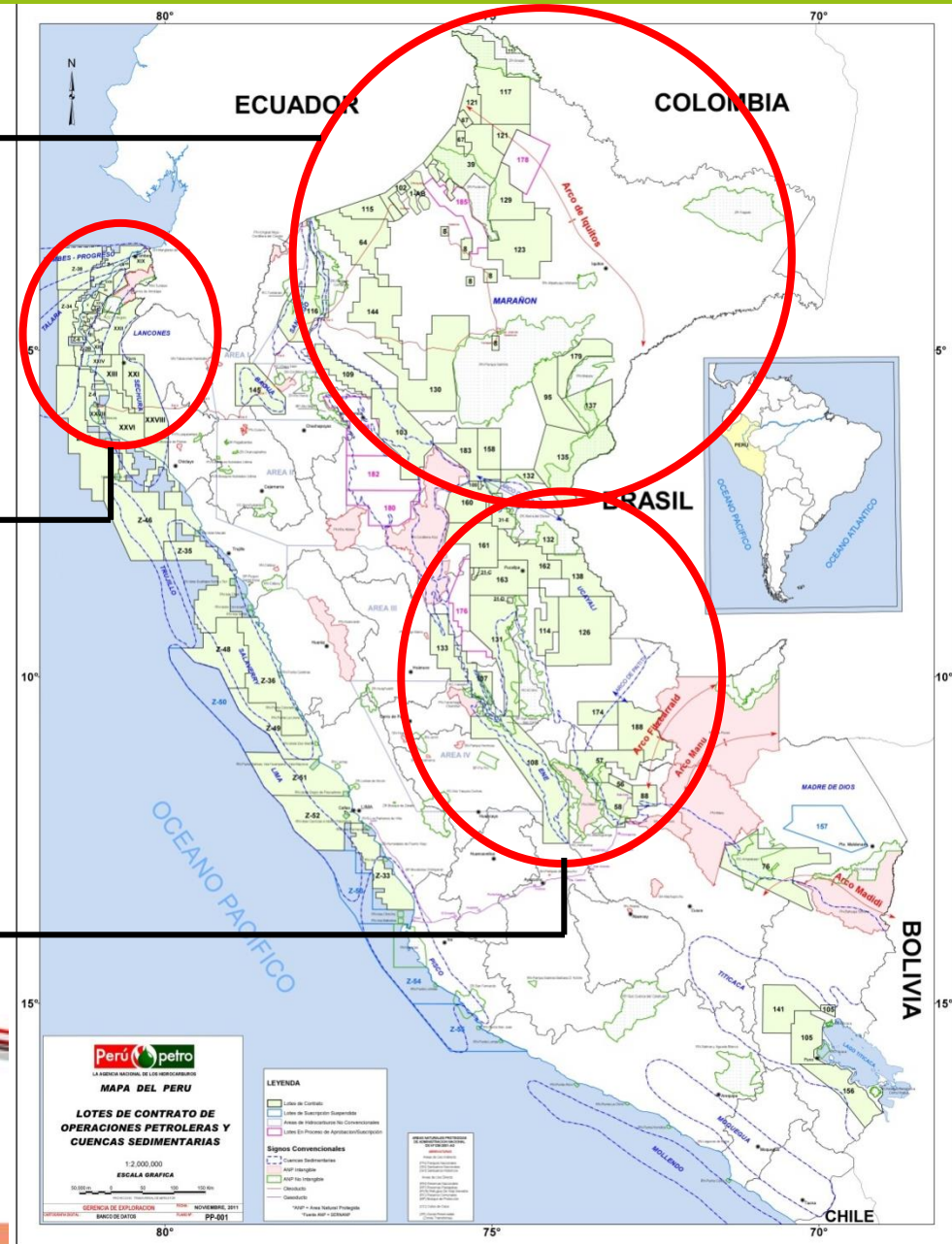
- 5 Light oil areas in Tumbes and Talara Basins



MARAÑÓN BASIN	
Cumulative	1,000 MMBP
Daily	30,000 BPD

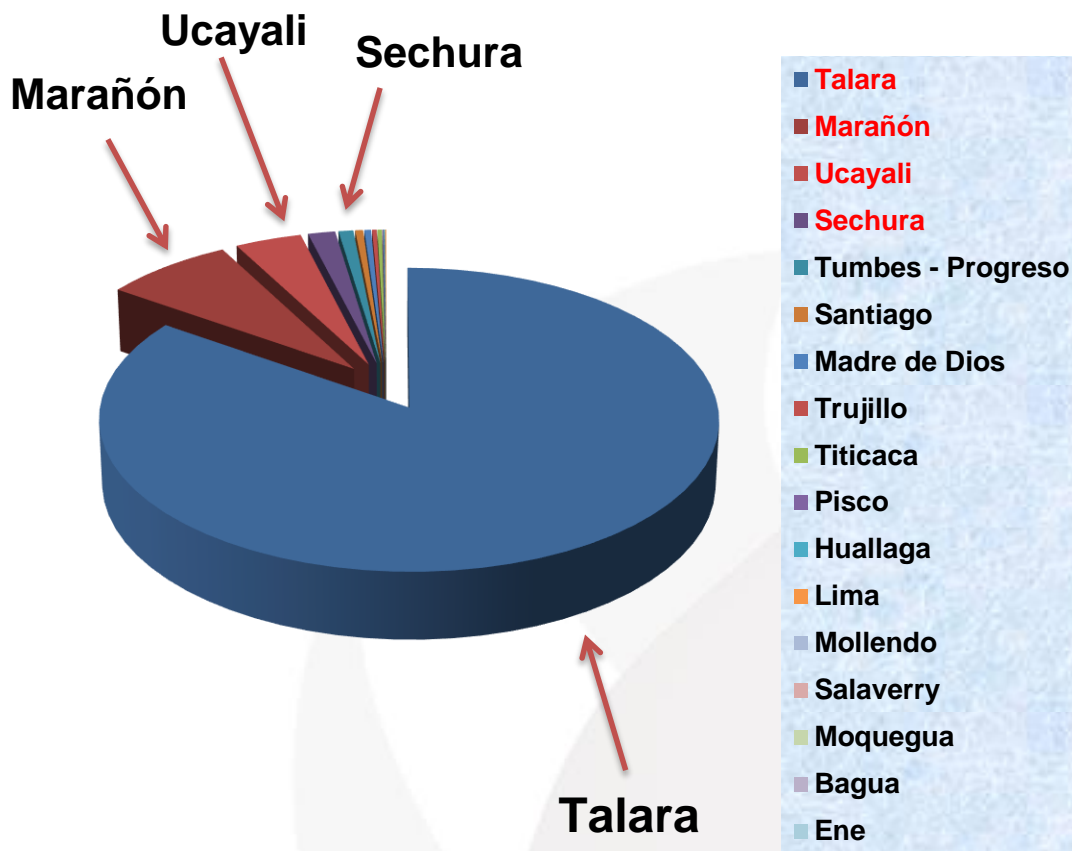
TALARA BASIN	
Cumulative	1,500 MMBP
Dairy	40,000 BPD
	30 MMPCGD

UCAYALI BASIN	
Cumulative	31 MMBP
	130 MMBC
	0.8 TPCG
Daily	600 BPD
	82,000 BCD
	1,000 MMPCGD



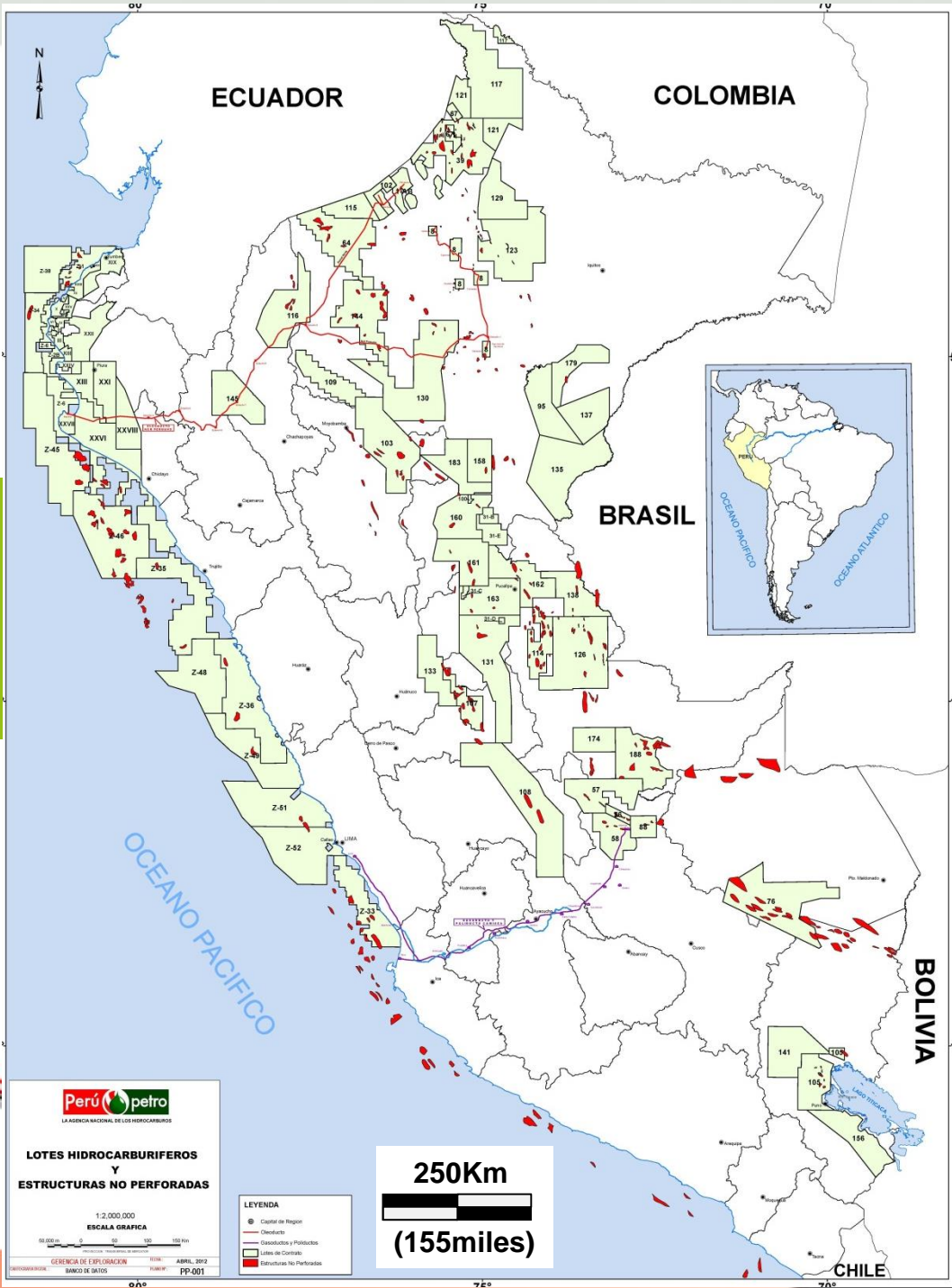
# Distribution of Wildcats in 18 Basins

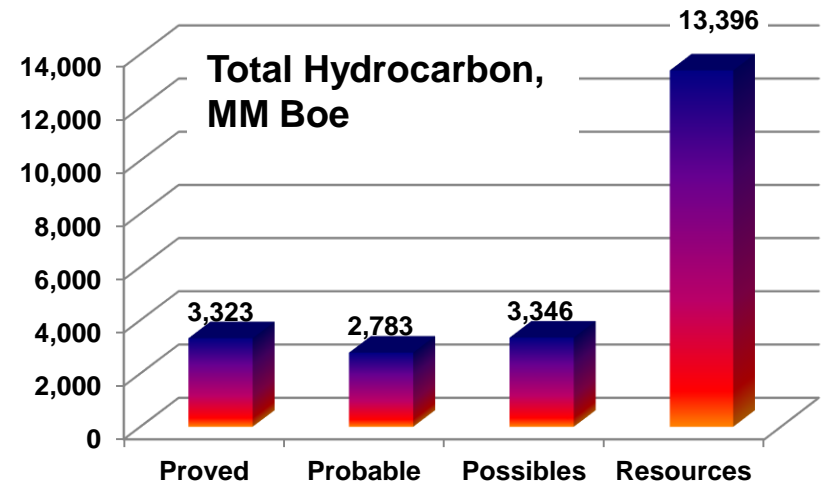
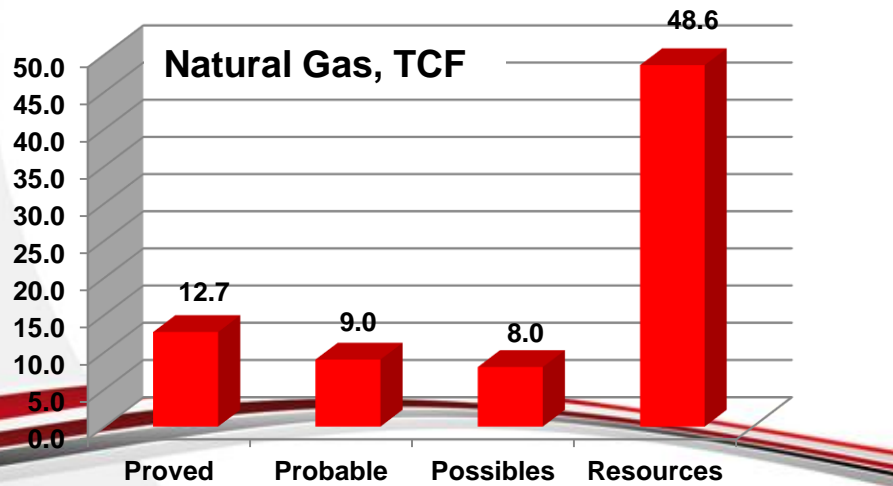
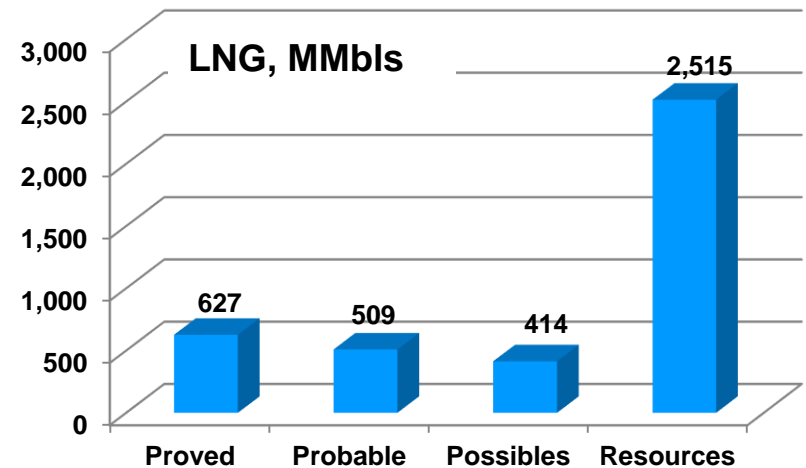
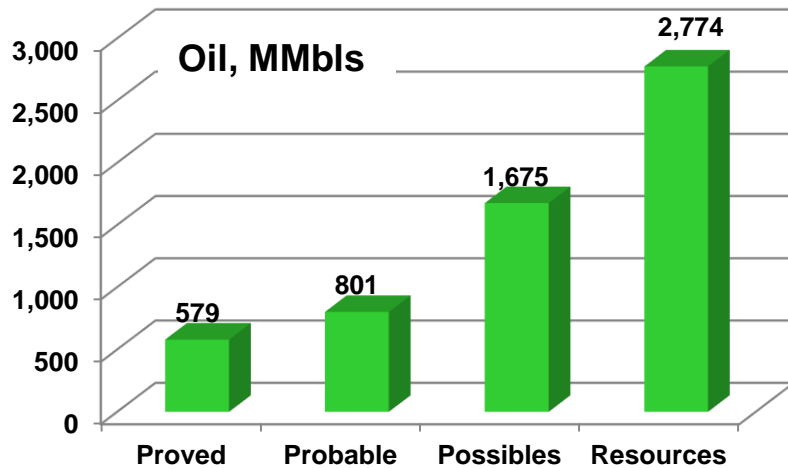
CUENCAS	Pozos Exploratorios	%
Talara	1,299	84.68
Marañón	115	7.50
Ucayali	59	3.85
Sechura	24	1.56
Tumbes - Progreso	13	0.85
Santiago	7	0.46
Madre de Dios	6	0.39
Trujillo	4	0.26
Titicaca	4	0.07
Pisco	1	0.07
Huallaga	1	0.00
Lima	1	0.00
Mollendo	0	0.00
Salaverry	0	0.00
Moquegua	0	0.00
Bagua	0	0.00
Ene	0	0.00
	<b>1,534</b>	<b>100.00</b>

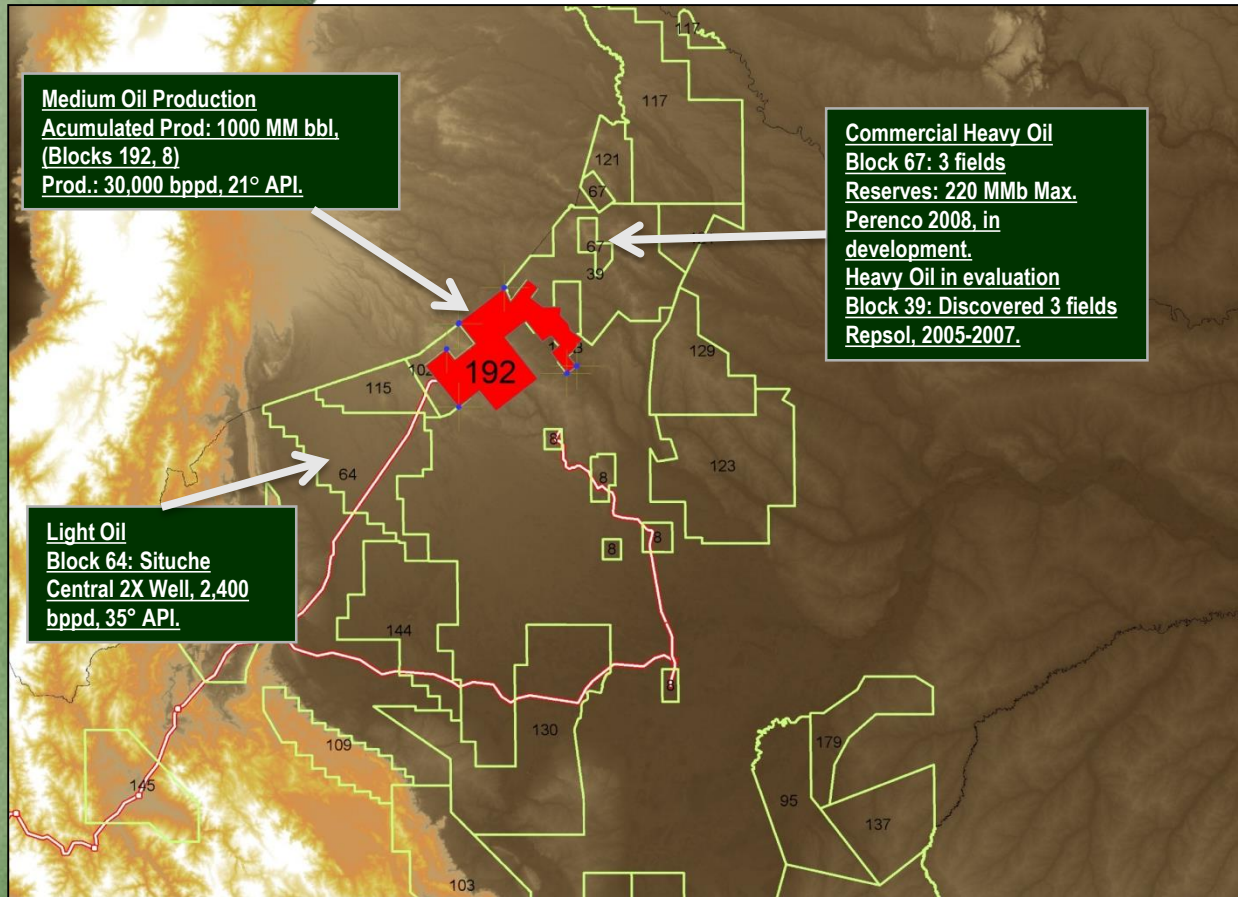


**98% Wilcats: 4 basins**

# 411 UN-DRILLED STRUCTURES



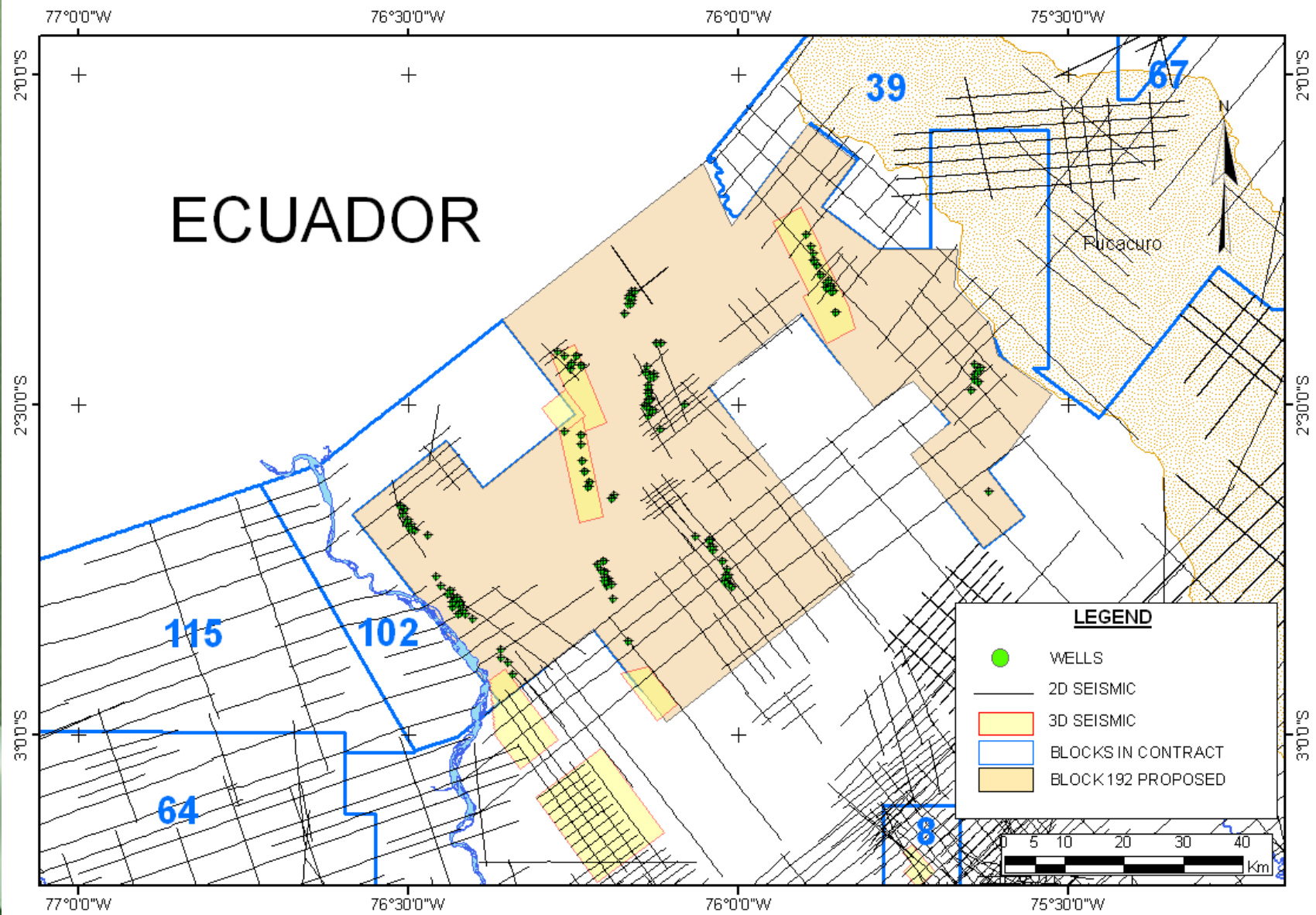




Block 192 is located in the north central part of the Marañon Basin. Three oil families: Light Oil (25 to 35 API), Medium Oil (18 to 25 API), and Heavy Oil (10-18API).

- Structures are low relief anticlines, axes oriented NE-SW and N-S. The structural closures varie from 4 to 20 milliseconds.
- Two **main Cretacic Reservoirs:** Vivian Fm. and Chonta Sand Member
- Structural Traps with lateral stratigraphic variations
- Early Structural Evolution
- 85% Reserves come from Vivian Reservoir
- Vivian Reservoir: Porosity 14-21%; Permeability 20-5000md.
- Chonta Reservoir: Porosity 12-19%; Permeability 5-1000md.
- Vivian: strong water drive







Block 192 is divided in 3 zones:

- **The Eastern Zone:**

Structural platform with low slope and reduced sedimentary thickness

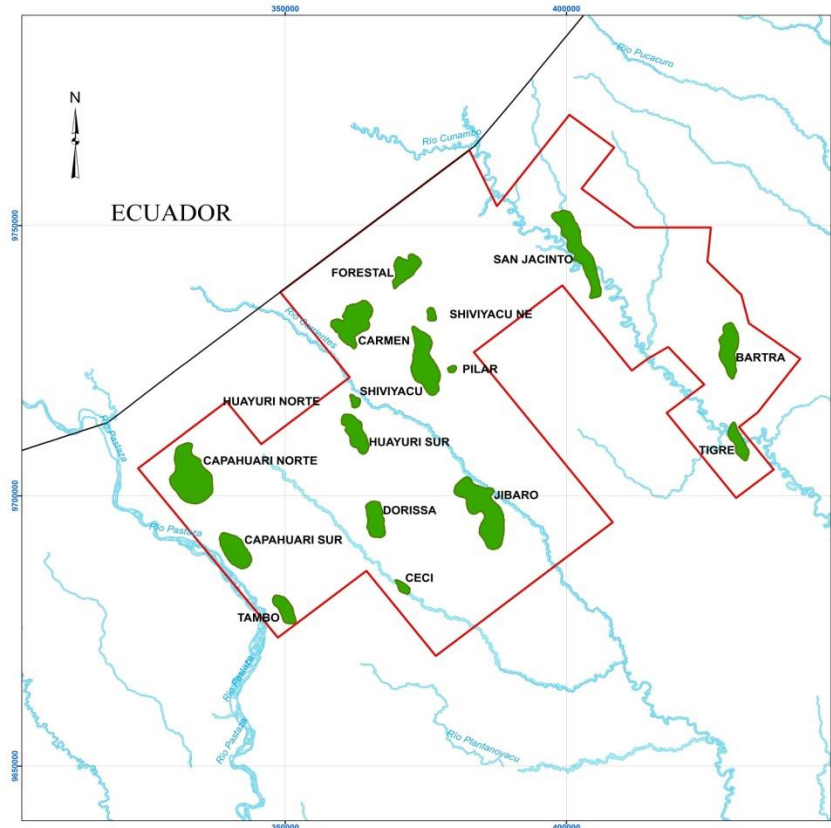
Fields San Jacinto, Bartra, Forestal, Shiviayacu, Jibaro, and Jibarito are located in this zone.

- **The Central Zone:**

Changing slope due to active normal faults which acted since the beginning of the basin. This hinge-line is oriented NNE-SSW, and many pre-cretaceous rock units pinch-out occurred here.

- **The Western Zone:**

More subsidence and present thickness of Jurassic, Triassic and Paleozoic rocks. Some structuration at Permian levels



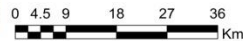
## FIELDS MAP

MARAÑÓN BASIN  
BLOCK 1A

### LEGEND

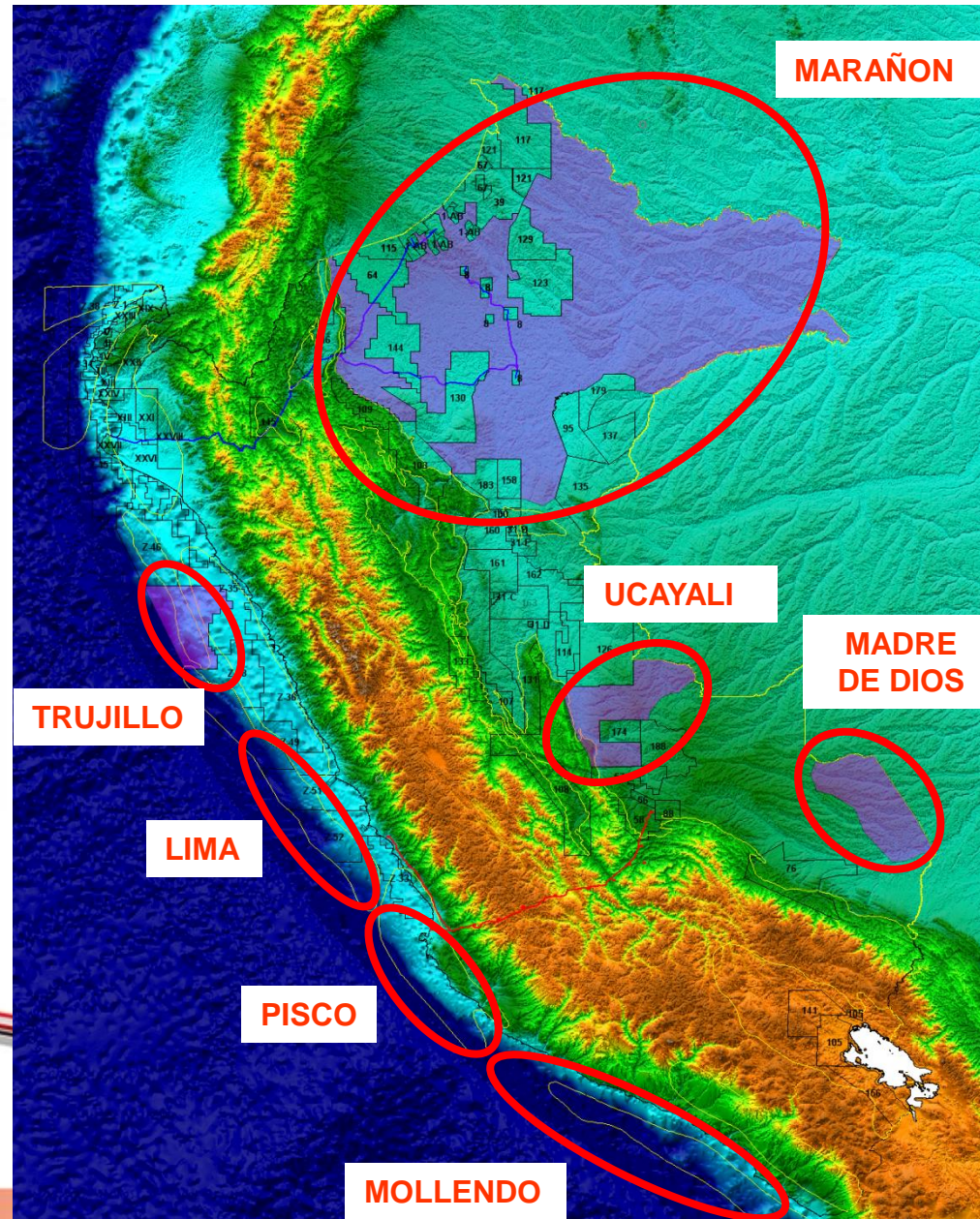
- BLOCK 192
- FIELDS
- RIVER

1:350,000

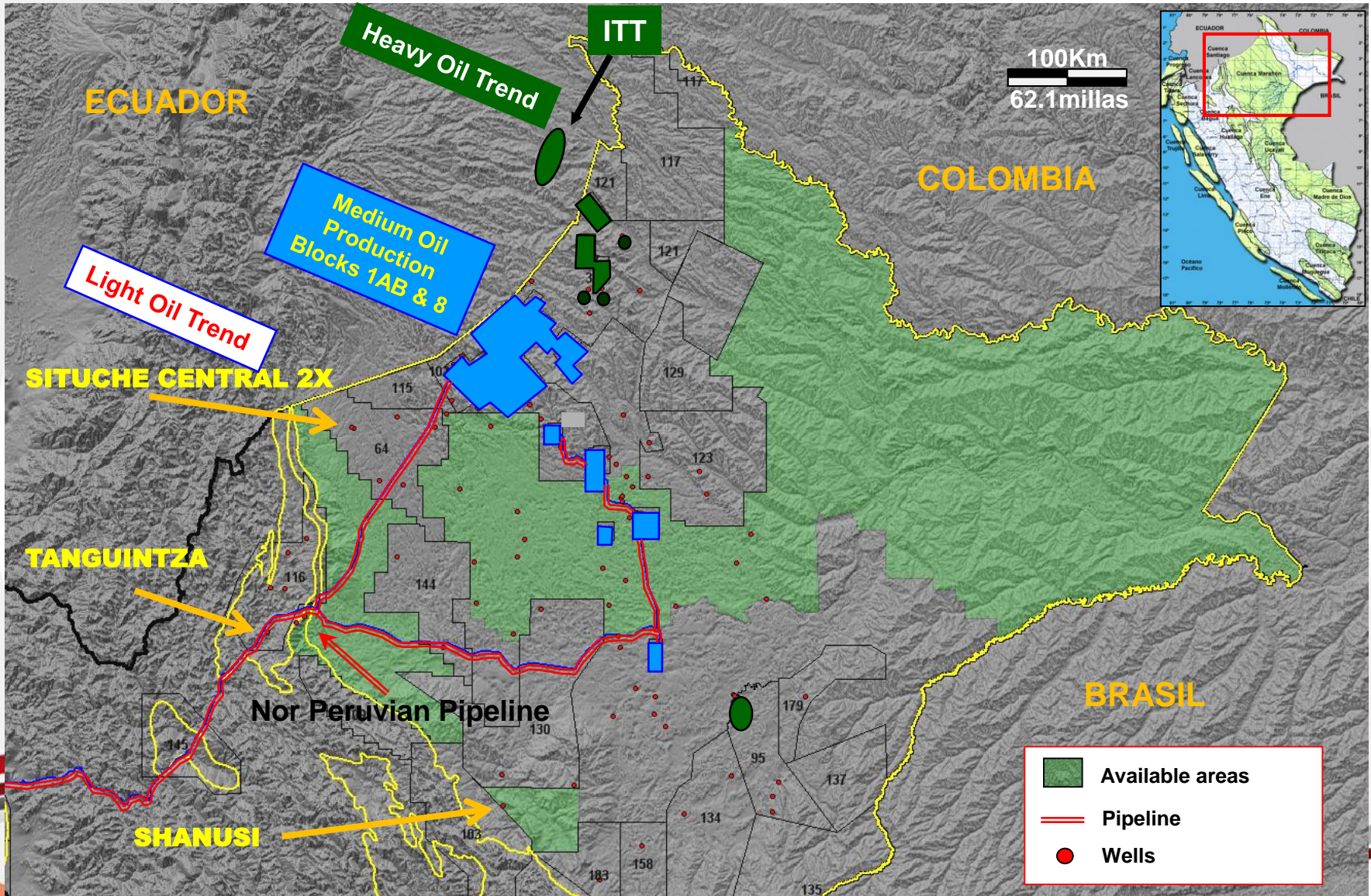


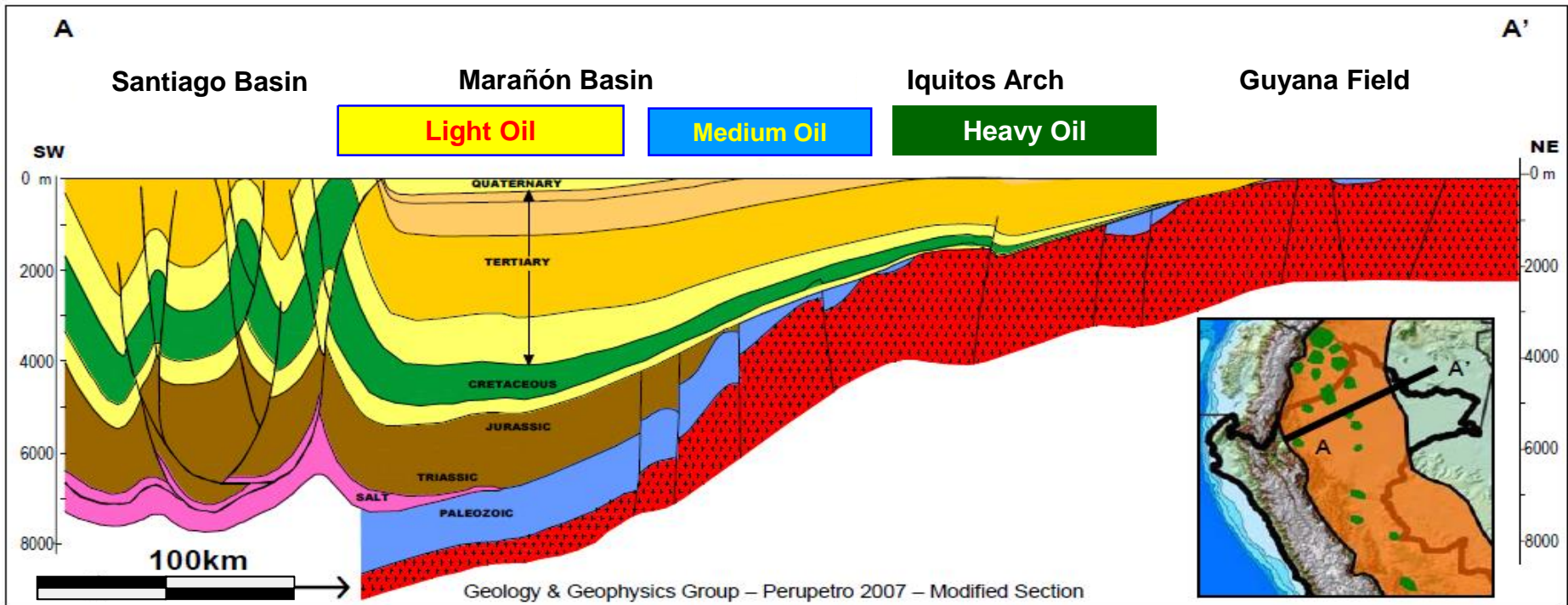
## New Blocks for exploration activities in 7 basins

For further information:  
[promotion@perupetro.com.pe](mailto:promotion@perupetro.com.pe)

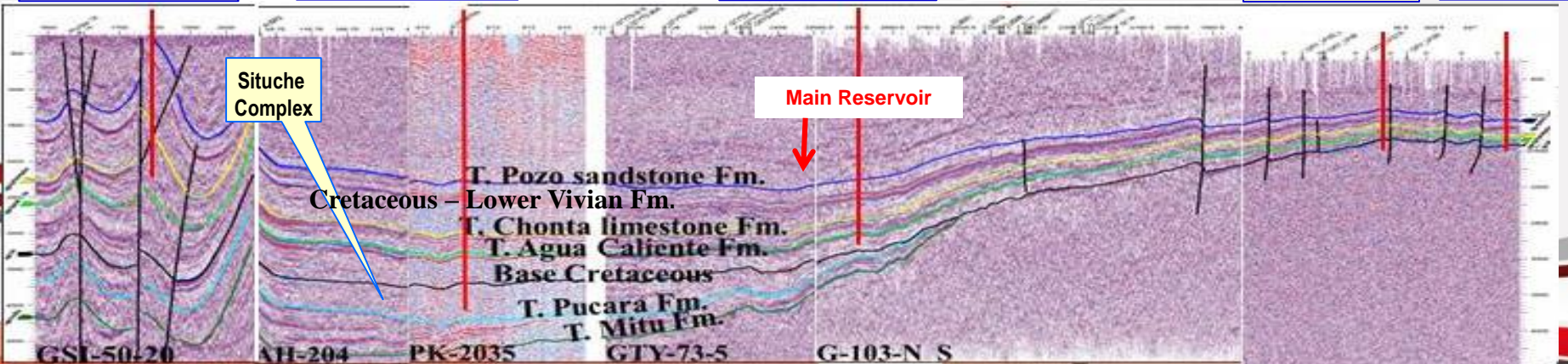


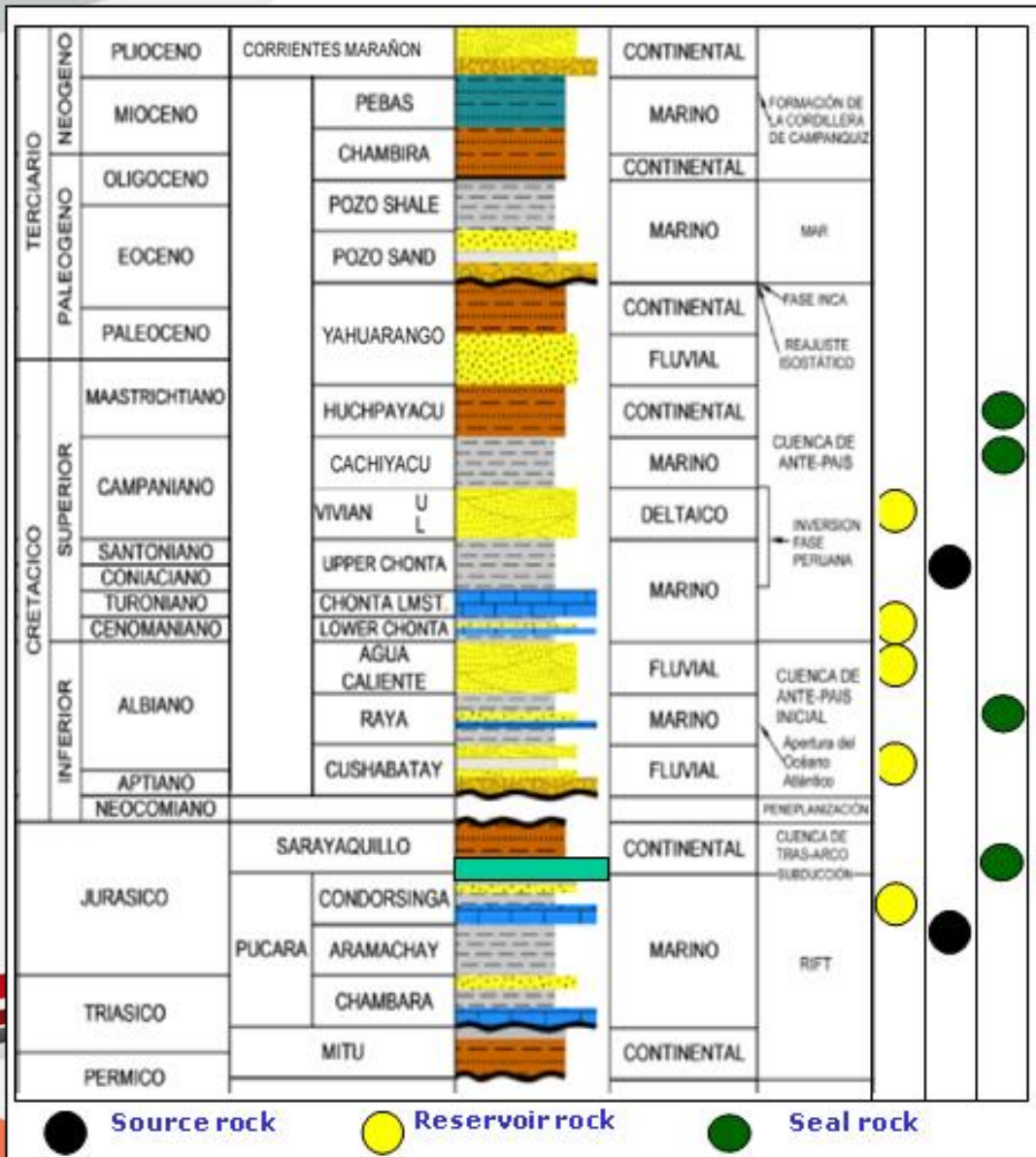
# Productive areas in the Marañon Basin





CATERPIZA 1X
SITUCHE 2X/3X
SHIVIYACU 1X
PIRAÑA 1X
RAYA 1X

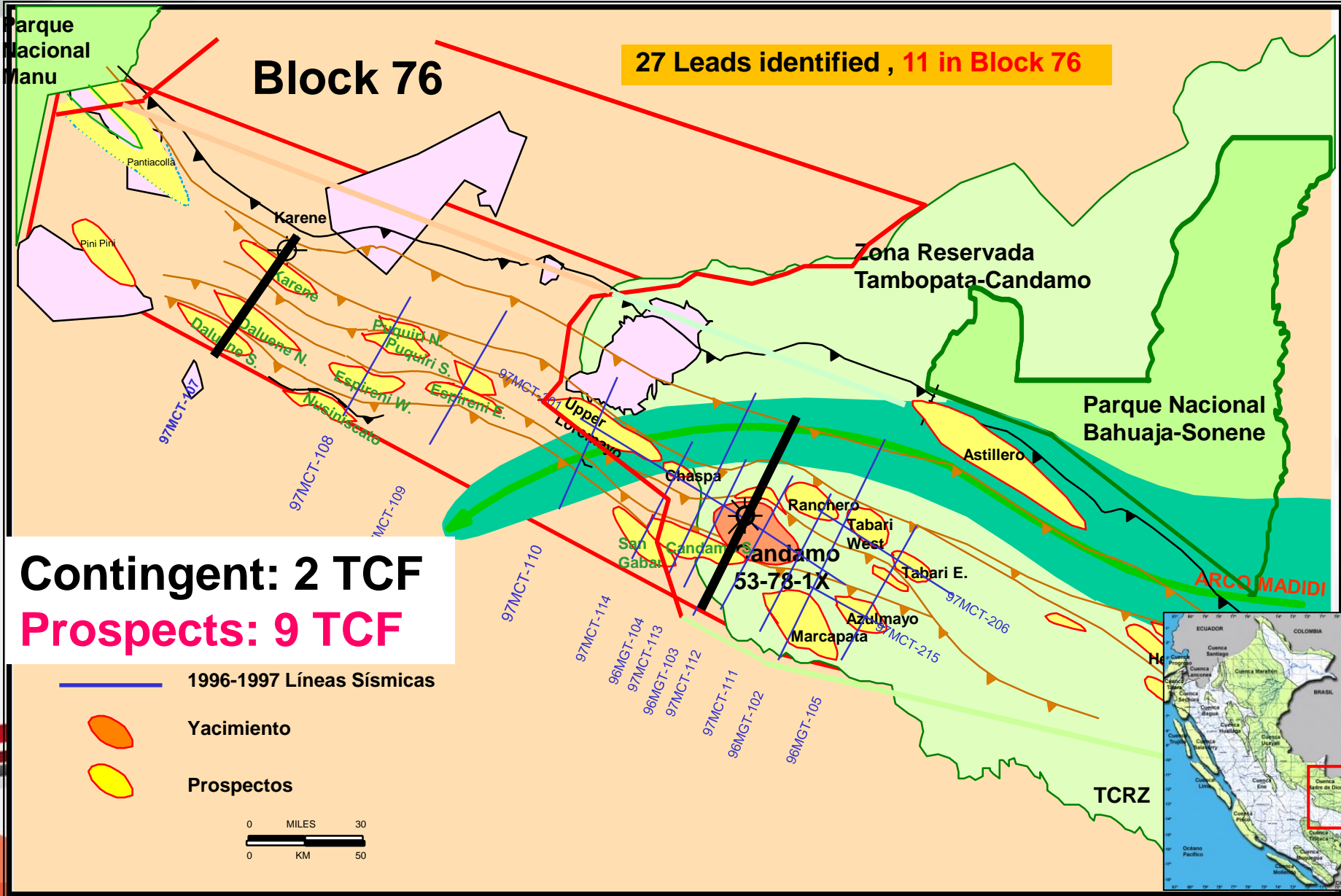




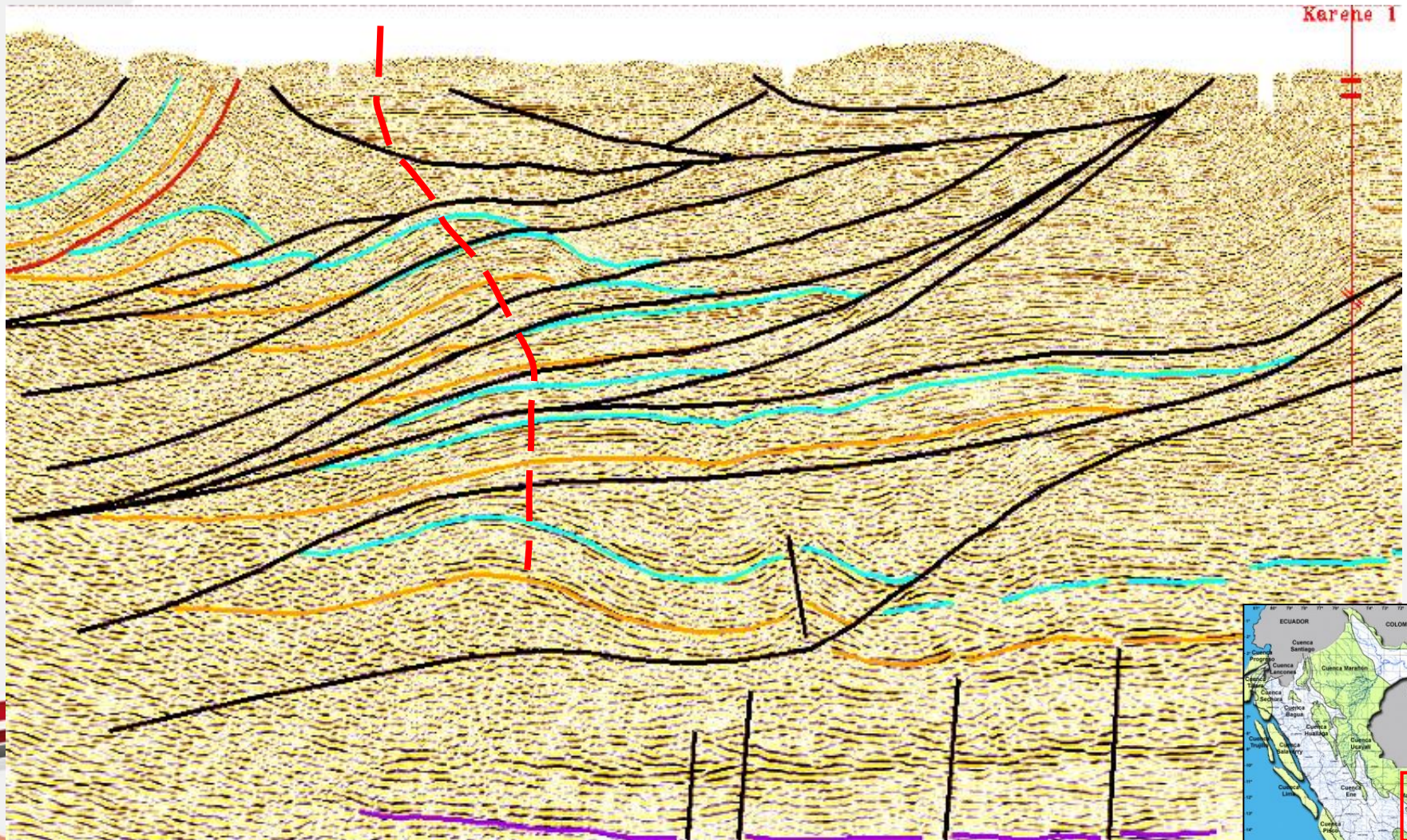
**Marañón Basin Stratigraphic Column**

**Petroleum Systems elements in the Northern part of the Basin.**

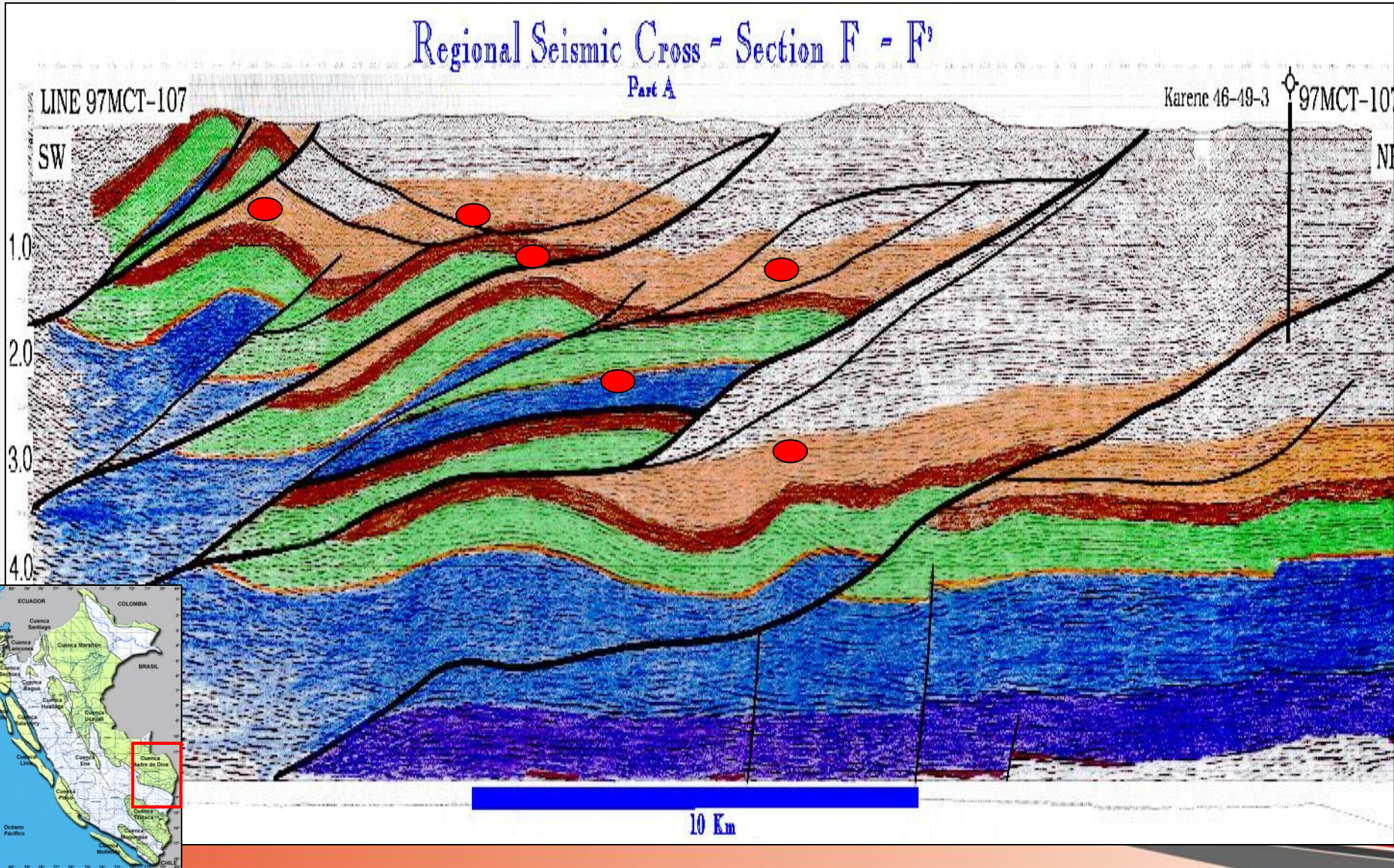
● Source rock    ● Reservoir rock    ● Seal rock



**1999:** Discovery of the **Candamo** Field (gas/condensate)

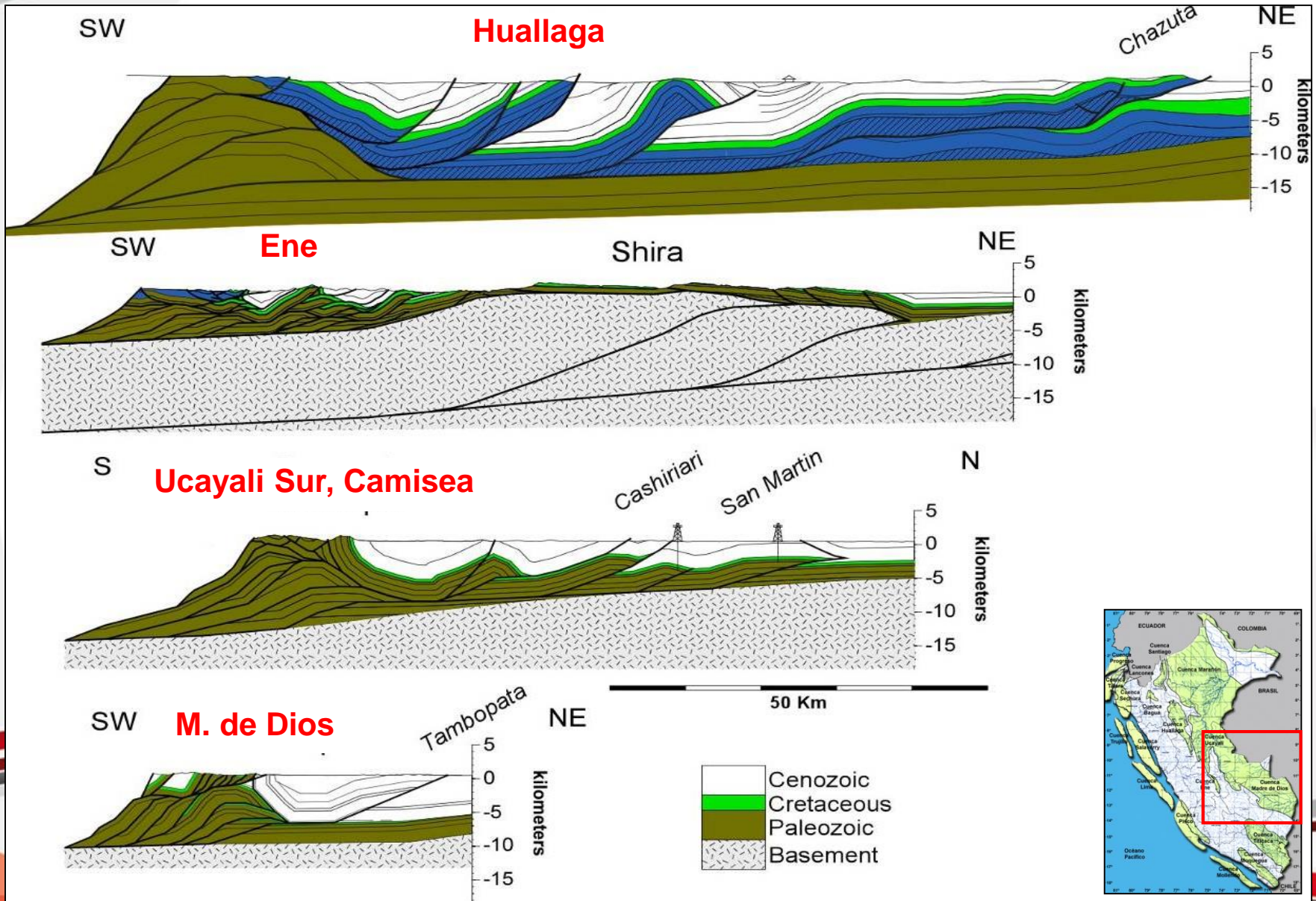


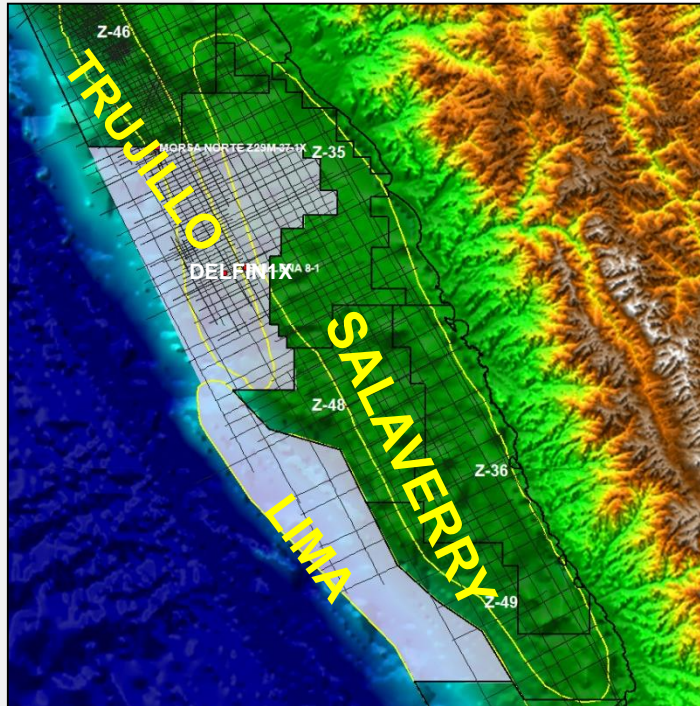
## Multiple un-drilled reservoirs





# The Folded Belt in the Sub Andean Trend



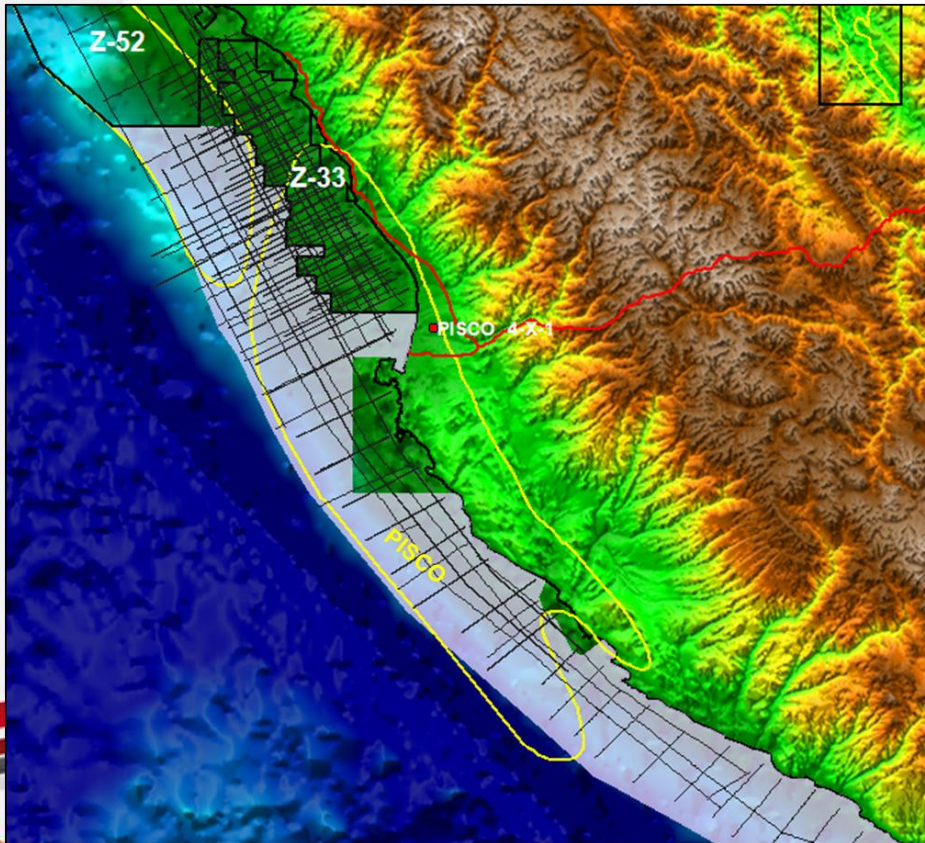


**AREA Aprox.:** 2'200,000 Ha  
**2D Seismic:** 4,613 km.  
**Digital 2D Seismic:** 4,613 km.  
**Wildcats:**

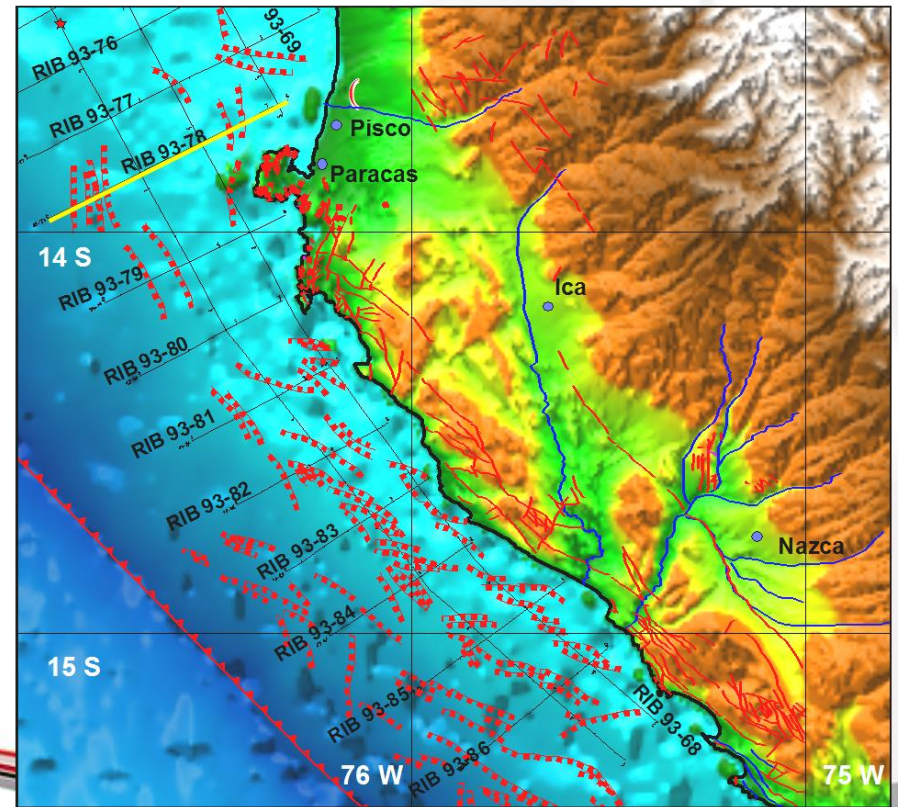
**Morsa Norte 1X**  
**Delfin 1X**  
**Ballena 1X**

**Well Logs:** LAS Format  
**New prospects:** 3

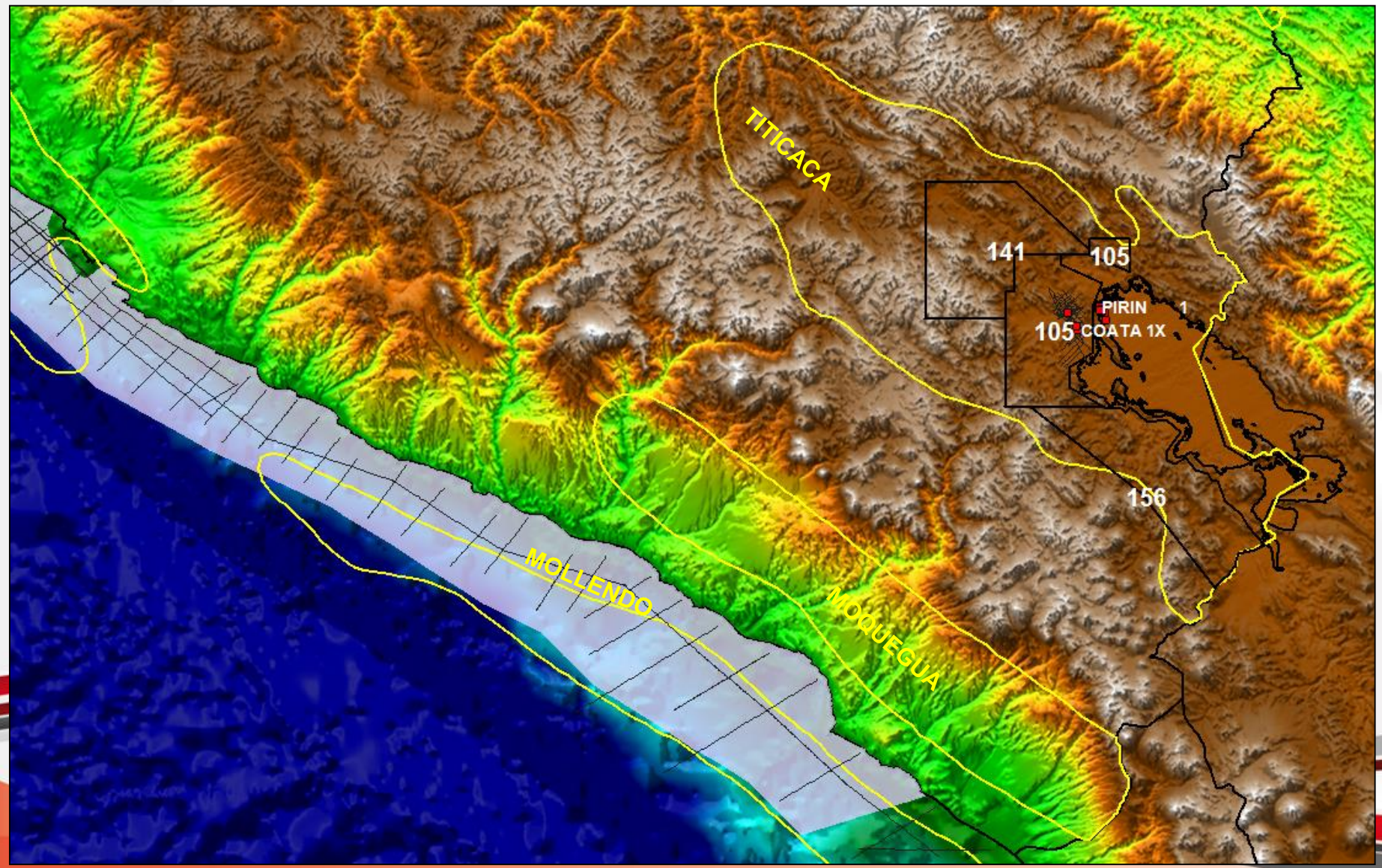
## Vintage Seismic



## Structural Map



## Vintage Seismic



1. All seismic, well data, well logs and technical reports available

1. Available for Download on Request

2. No charge for Data and Reports

The screenshot shows the Perú petro website interface. At the top is the logo and navigation links: Home, Site Map, Contact Us, and Intranet. Below the logo is a main navigation bar with categories: About us, Important Information, Investor and Contracting, Environmental Protection, Press, Citizen Participation, and Offices Decentralized. A secondary bar reads 'Promoting hydrocarbons we develop our Peru' with a language selector for Spanish and a date of January 17, 2012. The main content area features a large banner with the text 'Connection in Real time' and a headline 'Perupetro Sees Concessions'. Below this are three numbered red buttons: 'HOUSTON MEETING October 27, 2011', '>> PERUPETRO S.A. IN THE WORLD', and 'COMMUNITIES AND THE ENVIRONMENT'. On the left is a 'Links' sidebar with categories: Block Maps, Oil Fees, Contract in Force, Monthly Reports, Daily Production, and Transparency. The central 'Press Releases' section contains a news item: 'In the period January-September PERUPETRO TRANSFERRED S/. 2,028 MILLION FROM FEE TO THE REGIONS'. The right sidebar, titled 'ON LINE INFORMATION', displays a table of energy data:

Item	Value
WTI (13/01/12)	99.2 U\$/bl
Brent (16/01/12)	110.3 U\$/bl
Oil Prod. (16/01/12)	61.0 Mbl/d
Liq. Prod. Natural Gas (15/01/12)	75.1 Mbl/d
Gas Prod. (16/01/12)	996.4 MMcfd

At the bottom right, there are logos for the 'Ministerio de Energía y Minas', 'Prolinversion', and 'Portal del ESTADO PERUANO'. A 'Recent Events' section on the left lists 'the end of the year - Reuters' and 'Peru will seek to attract oil investments - The Associated Press'.

# ¡Tank you very much!

